

NEGASS
New England Gilbert & Sullivan Society
P.O. Box 367, Arlington, MA 02476-0004

Vol. XXIII No.7

- bubbles with wit and good humour -

Sunday, April 18, 1999

MITG&SP'S YEOMEN



APRIL 18 AT 2:00 PM: YEOMEN AT MIT. At 2 PM on Sunday, April 18, NEGASSers plan to meet on the ticket line outside the Sala de Puerto Rico on the second floor of the **MIT Student Center** to see **YEOMEN**. [If you'd like to try for a Group Rate, contact Us - Our contact info is on the masthead - and We'll see what We can do - otherwise We're afraid the tickets will only be available at

MIT's standard low rates - mlc] Why? Because this cast includes some of NEGASS's favorite people: **Larry Seiler** (remember his Florian at Sudbury?) as Jack Point, **Michael Goodwin** (remember his MIT Frederic?) as Fairfax, **Bridget Copley** (did you catch her MIT Patience?) as Elsie, **Nathan Handspicker** (did you see - and *hear* - him as the Boatswain, Sir Roderick, and/or Pooh-Bah at MIT?)... **Kate Thornton** as Phoebe, **Andrew Sweet** as Sgt. Meryll, **David Daly** as the Lieutenant - even hereditary NEGASSer and MIT freshman **Richard Burstein** as Second Yeoman.

And because **Alan Yost's** music direction is very fine. [And We hope that **Our** stage direction will be acceptable to the audience. - mlc]

After the performance, we plan to gather at **Mary Chung's**, a favorite local Chinese restaurant, for dinner. Please be in touch with Program Chair **Rebecca Consentino** by April 11 (see her contact info on the Masthead) to reserve your seat at the table.

HOW TO GET THERE: MIT is easily accessible by T: Take the Red Line to the Central Square stop, and walk south (or catch the #1 Bus) down Massachusetts Ave. - or go to the Kendall Square stop and walk west through the campus. If you're driving, take Mass. Ave. from anywhere to about a block north of Memorial Drive (on the Cambridge side of the Charles River), and find a parking space. (MIT parking lots, although posted "restricted", are actually free and open to all comers on Sunday, as are the parking meters on Mass. Ave.)

The MIT Student Center (known on campus maps as **Building W20**) is the large gray building surrounded by stairs on the north side of the lawn located on the west side of Massachusetts Ave., opposite the main entrance to MIT. The **Sala da Puerto Rico** is on the second floor of the building. People with Web access: Visit http://whereis.mit.edu/bin/map?locate=studcent&localte=bldg_w20 for an exact map of the area, or <http://whereis.mit.edu/doc/getting-to-mit.html> for clear directions from anywhere.

Mary Chung's is just a few blocks north on Mass. Ave. from the Student Center, within easy walking distance.



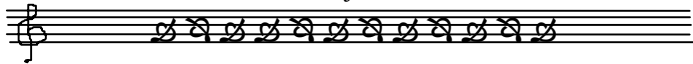


MARCH MEETING: A CONCERT OF G&S SOLOS AND ENSEMBLES: On Sunday, March 21, NEGASS was treated to an enjoyable performance of excerpts from *YEOMEN*, *PINAFORE*, *PATIENCE* and *MIKADO* performed by baritone **Dan Kamelic**, mezzo **Anita Costanza** and soprano **Jennifer Johnson**. Dan and Anita are well-known to the NEGASS crowd through their work with MITGASP and both lived up to the high standards we have come to expect. Jennifer Johnson, a student at **Longy School of Music**, is a new-comer but proved to be a most welcome one, demonstrating a clear tone and good enunciation. **Bonnie Donham** provided excellent accompaniment at the piano. The program of solos and duets (there don't seem to be any G&S trios for a soprano, mezzo and baritone) was over all too soon. [*Thus challenged, We rushed to Our handy list of G&S ensembles, and found that, in fact, there is no such trio - or none that We can remember! Does anyone else know of such an one? -- mlc*]

Unfortunately, the attendance was embarrassingly low, to put it politely, more than suggesting that this is not the type of entertainment which will draw enough of the membership to justify repetition.

J. DONALD SMITH

[*The NEGASS board is still attempting to understand what draws members to meetings, and what leaves you sitting at home. Did you miss this meeting because it didn't interest you, intrinsically? - or because it didn't interest you enough to give up a Sunday afternoon, but might have attracted you on a Thursday night? - or because you'd attended the last meeting and thought two in a row was too many...? Did you stay away because you hadn't heard enough about the performers or the performance in advance? - or because you hadn't known the details of the meeting enough in advance to make your plans? Call Us at (781) 646-9115, or e-mail Us at mlcar@mit.edu, and tell Us why! -- mlc*]



Harlequin Costumes tells Us they have complete sets of costumes for most G&S shows, and for other shows as well, and are happy to make extra costumes to fit difficult sizes. "We have shipped productions all over Canada and the United States and our staff is experienced in creating costumes that will fit exactly without ever seeing the actors... We will be happy to send your costumes for your first fittings or dress rehearsals, at no extra charge... Harlequin also offers wig rentals and sales plus a complete range of theatrical make-up." Call 1-800-823-6706, or check out their Web site at www.harlequincostume.com for more information.

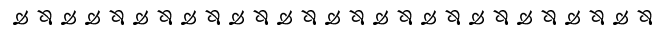
Tentative Meeting Schedule, 1998-99:	
4/18:	Matinee performance of MITG&SP's <i>YEOMEN</i> ; dinner at Mary Chung's
5/30	Huntington Theater's <i>MIKADO</i>
6/?	Election meeting!
8/?	Picnic/sing-through, place TBA

~ NEXT BRAY COPY DEADLINE: May 9 ~

Next Bray Stuffing: May 16 at 3:00 PM. Call Us at (617) 253-5810 during the day, at (781) 646-9115 evenings and weekends, or email mlcar@mit.edu at any time, for directions to Our snug and easy-to-get-to home. -- mlc



Welcome, Welcome, Welcome We New Members Janet Shawcross. Janet, who lives in Lowell, MA, describes herself as an "Enthusiastic Audience," "G&S Video Watcher," and "Greene, Bradley etc. Reader." She adds, "I could probably play any part in any G&S production because of my experience - I have experienced every age of every character." [*We like her spirit!*] **Hearty Greetings Offer We!**



SUMMER SAG IN SAVOY SIGHTINGS? TAKE HEART! ELDERHOSTEL makes G&S alive and well in July at the **Incarnation Center** in Ivoryton, Connecticut, in the form of two programs to be conducted by **Ralph MacPhail, Jr.**-- known to many NEGASS members as a G&S enthusiast, scholar and all-around Savoy savant, and for some years as major-domo of **SavoyNet**-- and Music Director **Deborah Lyon**. The first program, July 11-17, will feature lectures, readings, group singing, and video and audio recordings, and will conclude, for those inclined to perform, with a concert version of **IOLANTHE**. This course, originated more than a dozen years ago by **Bob Cumming** and **Deb Lyon**, attracts a number of repeat participants each year.

The following session, July 18-24, will concentrate on "The Big Three"-- **PINAFORE**, **PIRATES** and **MIKADO**-- with less emphasis on performance, though there will be a last night concert (again, by those so inclined). This program, also long-running, was originated by Rafe at Bridgewater College in Virginia. Those familiar with Elderhostel will know that tuition (\$397 for each session) includes room and board (Sunday dinner to Saturday breakfast), and that eligibility begins at age 55 (a younger spouse or adult companion may attend with an age-eligible participant). **Register toll-free with Elderhostel at 1-877-426-2167.** Questions

"The fairy-princess field is an extremely varied and rewarding one," AAFP director Princess Moondancer said. "As a fairy princess, you'll have the opportunity to do everything from sprinkling pixie dust on an enchanted apricot glade to undoing the spell of an evil queen and turning a toad back into a handsome prince. What other job can offer those kinds of satisfying challenges on a daily basis? Being a magical fairy princess is a great way for girls to really let their full potential shine through."

But despite such arguments, little girls show little interest in the once-thriving fairy-princess field. "When I grow up, I want to be a U.N. interpreter," said 7-year-old Ashley Pfeiffer of Lodi, NJ. "Fairy princesses are stupid."

"I got a Princess Pretty petals make-up kit for my birthday, and I hate it," said Caitlin Muller, 9, of Columbus, GA. "Everything was pink, and it smelled like stinky perfume. I'd rather play with my Invisible Woman anatomy doll. You can actually see her entire digestive tract and circulatory system."

Fairy princessing is not the only field to fall on hard times in recent years. According to the BLS report, occupations such as swan queen, enchanted ballerina, good witch, and beauty-pageant winner have all experienced sharp declines in popularity, as well.

"One thing is for certain," Princess Moondancer said. "If America's girls continue to ignore the fairy-princess profession, very few of us will be living happily ever after."

[We know no author for this, but were given the addresses: Msleighm@aol.com (by way of Maureen Roullet <momak@unet.com.mk>)]



CALENDAR

NYG&SS (the New York society) will hold its next meeting on Thursday, April 15; Other meetings: Fri., 5/14 and Sat., 6/12. All meetings are at CAMI Hall, 165 W. 57th St., NYC. Doors open at 7:00; the meeting starts at 7:30 (*new time!*), and the Inner Brotherhood go out for coffee afterwards.

THE Gilbert & Sullivan Society (of England) 1998-99 meeting plans include the dates April 9 and May 5 -- if you're on that side of the pond, give them a look-in! Write to Honorary Secretary **Margaret Bowden**, 1 Nethercourt Avenue, Finchley, London, N3 1PS for more info.

The **Simsbury Light Opera Company (SLOCO)** will present **YEOMEN** with direction by Artistic Director **Ron Luchsinger** and Music Director **John Eells**, at Simsbury High School, 34 Farms Village Road, Simsbury, CT on April 10, 17 & 24 at 8:00 PM, April 11, 18 & 24 at 2:15 PM. Tickets: Adults \$20,

Students (under 18) \$15, Senior Citizens (matinees only) \$15, Ticket line: (860) 561-2000

Stephen Grover provides the following info: So, where IS Simsbury, Connecticut? From north or south on I-91, take exit 35B (Route 218, Bloomfield); From east and northeast on I-84 or I-384, follow I-291 to exit 1 (Route 218, Bloomfield). THEN: follow rte 218 about 5 miles; take a right onto rte 185. Follow 185 for 4.6 miles, and take a right onto US-202 and go 1.7 miles. Take a left onto rte 167. When 167 bears left (about 0.7 miles along) go straight and Simsbury HS will be on your immediate right.

MITG&SP's spring show, **YEOMEN**, will be performed April 16-17 and 22-24 at 8 PM, and April 18 & 25 at 2 PM. Stage Director: **Marion Leeds Carroll**; Music Director: **Alan Yost**. (See the Meeting Notice on the first page for cast info!) For more info, contact MITG&SP via e-mail at savoyards-request@mit.edu, call (617) 253-0190, or visit <http://www.mit.edu/activities/gsp/home.html>

The Sudbury Savoyards' 1999 production, **IOLANTHE**, will be performed April 22-24 at Lincoln-Sudbury Regional High School, Sudbury, MA. Once again, **Kathy Lague** will be both Stage and Music Director, with help from **Eric Schwartz** and **Bill Kuhlman**. The cast is very exciting: **Dennis O'Brien** is the Lord Chancellor, **Laura Schall Guillart** the Fairy Queen, **Todd Allen Long** is Strephon, **Amy Allen** is Phyllis - and other NEGASS favorites cram the rest of the roles. Visit the SS's Web site at <http://www.sudburysavoyards.org/> or call (978) 443-8811 for more information.

Harvard-Radcliffe G&S plans Gershwin's **Of Thee I Sing** [yes, *We know it isn't*] as their Spring show. For more info, contact **Lane Shadgett** at shadgett@fas.harvard.edu, or phone 617-496-4747 - or visit their Web page: <http://www.hcs.harvard.edu/~hrsgsp/>

UMGASS (The U. of Michigan G&S Society) plans **GONDOLIERS** for April 8th - 11th, 1999. Visit <http://www.umich.edu/~umgass/> for more information.

If you're in Canada, catch the **G&S Society of Winnipeg's** production of **GONDOLIERS**, planned for 4/15-18.



Auditions will be held in early May for the **Valley Light Opera** (Amherst, MA) 25th anniversary production, **PIRATES**, which will be performed on November 5, 6, 7, 12 and 13 at the Amherst Regional High School auditorium. More news as it breaks! NB: VLO has a new web site, www.vlo.org, provided by **BerkshireNet**.

Troupers Light Opera Company will perform **YEOMEN** on May 8, 9, 14 and 15, 1999 in New Canaan High School. For further information contact **Bobbie Herman** at 203-255-1577.

THE GOLDEN LEGEND, a cantata setting by Sullivan of an epic poem by Longfellow, will be performed by the **Connecticut G&S Society** on Saturday, May 15 at 8 PM at the North Guilford Congregational Church, using their Peragallo organ played by guest organist **Deborah Lyon**. This is a pretty unusual offering; not many groups have the resources to mount a performance of this cantata. As this is a benefit for the church restoration fund, tax-deductible advance reservations are available until 5/3 for a \$20 donation. Make checks payable to the No. Guilford Congregational Church and mail with SASE to CG&SS, P.O. Box 2152, Middletown, CT 06457-2152. For more info, call 1-800-866-1606.

How to get there: From junction of Rt. 80 & 77 in Guilford, go North on 77 toward Durham/Middletown for one mile, left onto Hemlock Ave. to Great Hill Road, left for ½ mile to the church.

Auditions for **CG&SS's** Fall production, **PINAFORE**, will be held in late May.

For information about the **Boston University Savoyards** reunion planned for May 21-23 (sponsored by the **BU Alumni Association**), contact **Jaqui Lewis** at (617) 353-2248, or e-mail reunion@bu.edu.

The **Huntington Theater's** run of **MIKADO** will take place May 21-June 20, 1999. The company will then move its production to the **North Shore Music Theatre**, for a run from June 29-July 18. For more info, check the Huntington's web site at <http://www.bu.edu/HUNTINGTON>, or, for North Shore tix, call 978-9228500 x 235 or 211, or visit www.nsmt.org.

The **Nova Scotia Gilbert & Sullivan Society** is performing **YEOMEN** at the **Rebecca Cohn Auditorium** in Halifax on May 6-8, 1999. For further information, call (902) 429-1287 or e-mail **Richard MacMichael**, President of NSGSS, at macmicrs@gov.ns.ca.

The **Hancock County G&S Society** will revive their recent **TRIAL/PINAFORE** on July 15, 16, 17, 1999 at the Grand Auditorium in Ellsworth, Maine. Leads include NEGASSers **Lee Patterson** (Counsel, **TRIAL**) and **Irv Hodgkin** (Dick Deadeye, **PINAFORE**). For more info, call Lee at (207) 244-4044.

See article above for information on **Elderhostel** offerings planned for July in Ivorytown, CT.

College Light Opera Co. (CLOC), which performs at the **Highland Theatre**, Off Depot Ave. in Falmouth, MA, plans **GONDOLIERS** June 29-July 3 and **PINAFORE** August 17-21. Box office phone opens 6/14 at 10 AM: (508) 548-0668. Or mail ticket orders to CLOC, P.O. Drawer 906, Falmouth, MA 02541. All tickets are \$20.

Ocean State Lyric Opera (formerly Ocean State **Light** Opera) plans **La Boheme** and **PIRATES** for the coming season - dates TBA.

THE NEW ENGLAND GILBERT AND SULLIVAN SOCIETY

PO Box 367, Arlington, MA 02476-0004

Send electronic contributions to our e-mail address:
negass@iname.com

President **RICHARD FREEDMAN:**

(617) 630-9525; rnf@null.net and
<http://people.ne.mediaone.net/rnf>

Vice-President **J. DONALD SMITH:** (508) 823-5110;
dsmith@umassd.edu

Secretary **CAROL MAHONEY:** (781) 648-1720;
MAHONEY.CAROL@EPAMAIL.EPA.GOV

Treasurer **PHIL BURSTEIN:** (781)646-3698;
plburst@elensys.com

Program Chair **REBECCA CONSENTINO:** (617) 731-3998; rac@bu.edu and
<http://www.geocities.com/Vienna/Strasse/1065>

Members at Large:

Company Promotor **KATHERINE BRYANT:** (617) 491-0373; klb@cybercom.net and <http://www.cybercom.net/~klb>

SHELDON HOCHMAN: (508) 842-7617;
GAMAREX@aol.com

PATRICIA BREWER: (617) 323-3480;
caqsey@aol.com

Membership Officer: **BILL MAHONEY:** (781) 648-1720

Newsletter Editor: **MARION LEEDS CARROLL**
(781) 646-9115; mlcar@mit.edu - and:
<http://web.mit.edu/mlcar/Public/www/mlcarroll.html>

NEGASS membership dues are \$15 and up. Please send membership inquiries to **Bill Mahoney** C/O the above address.

The **NEGASS Web Page** is located at
<http://diamond.idbsu.edu/GaS/societies/negass.html>
The Trumpet Bray can be read on line at
http://diamond.idbsu.edu/GaS/societies/Trumpet_Bray.html